

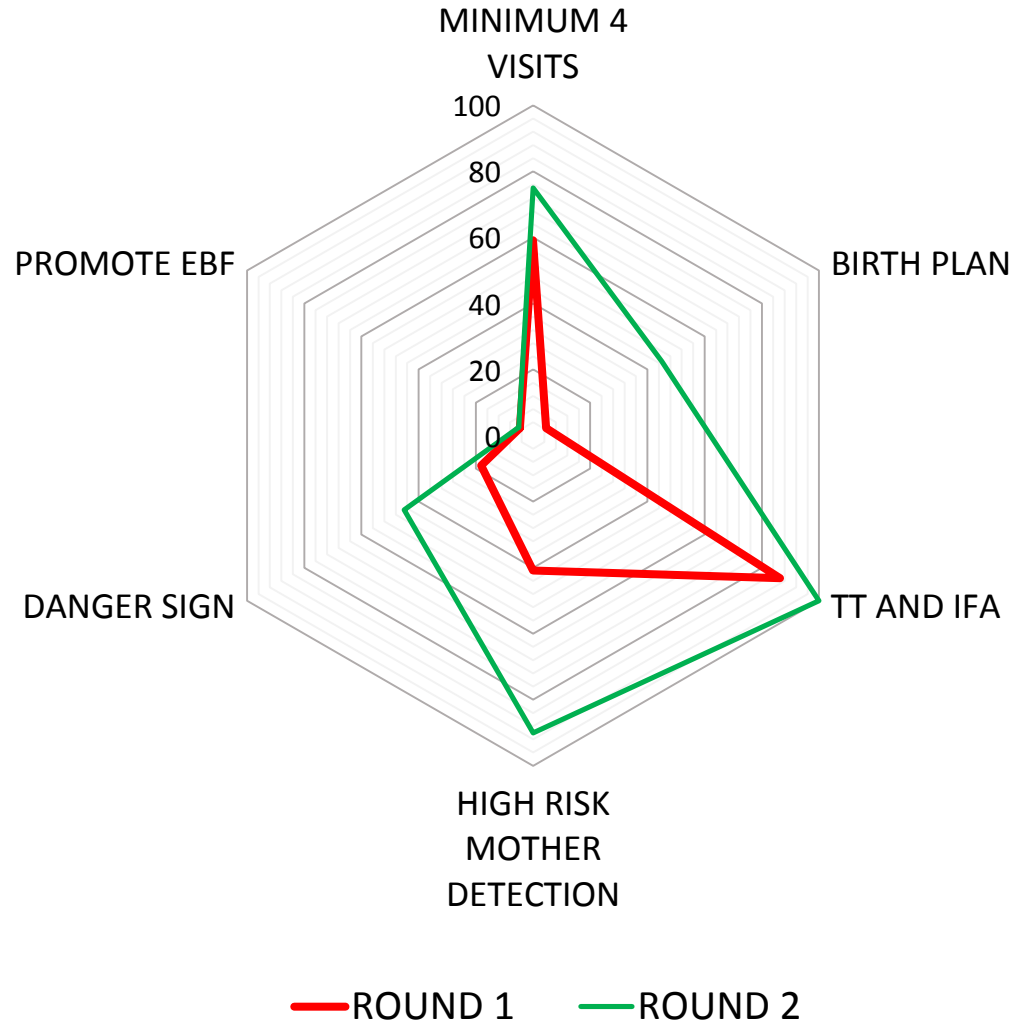
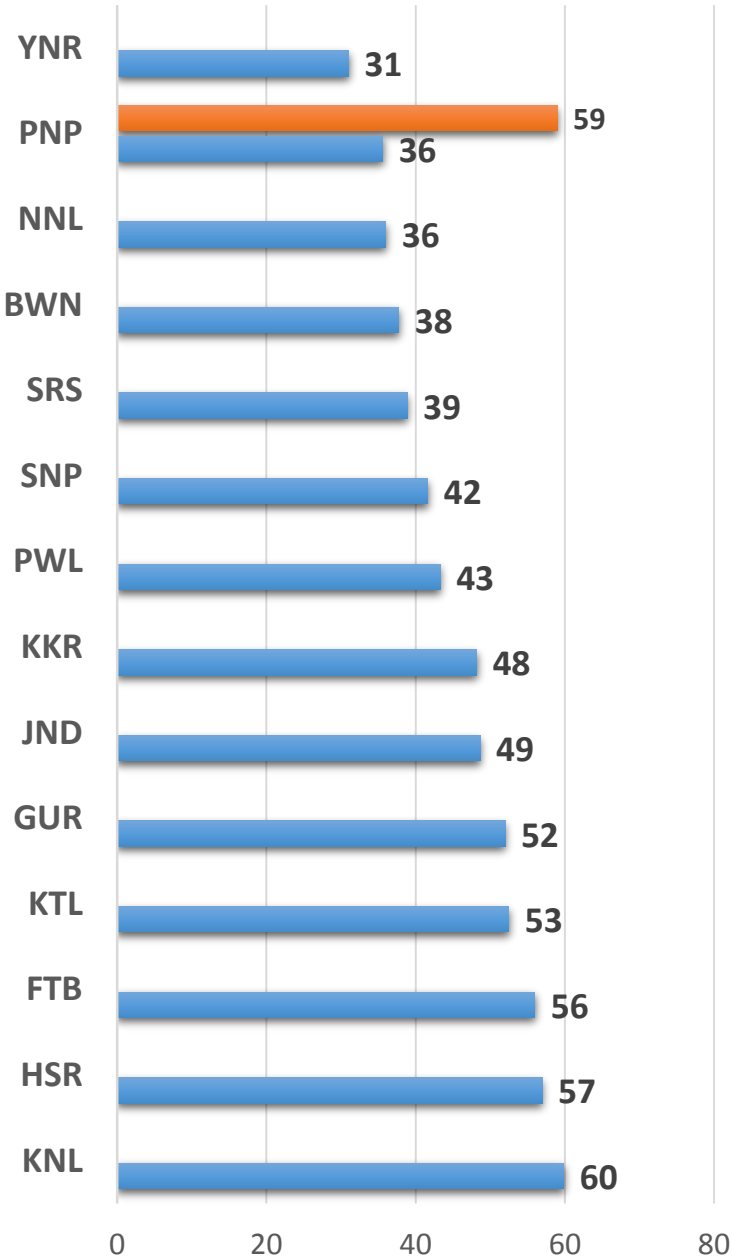


# Essential Newborn Care and Resuscitation

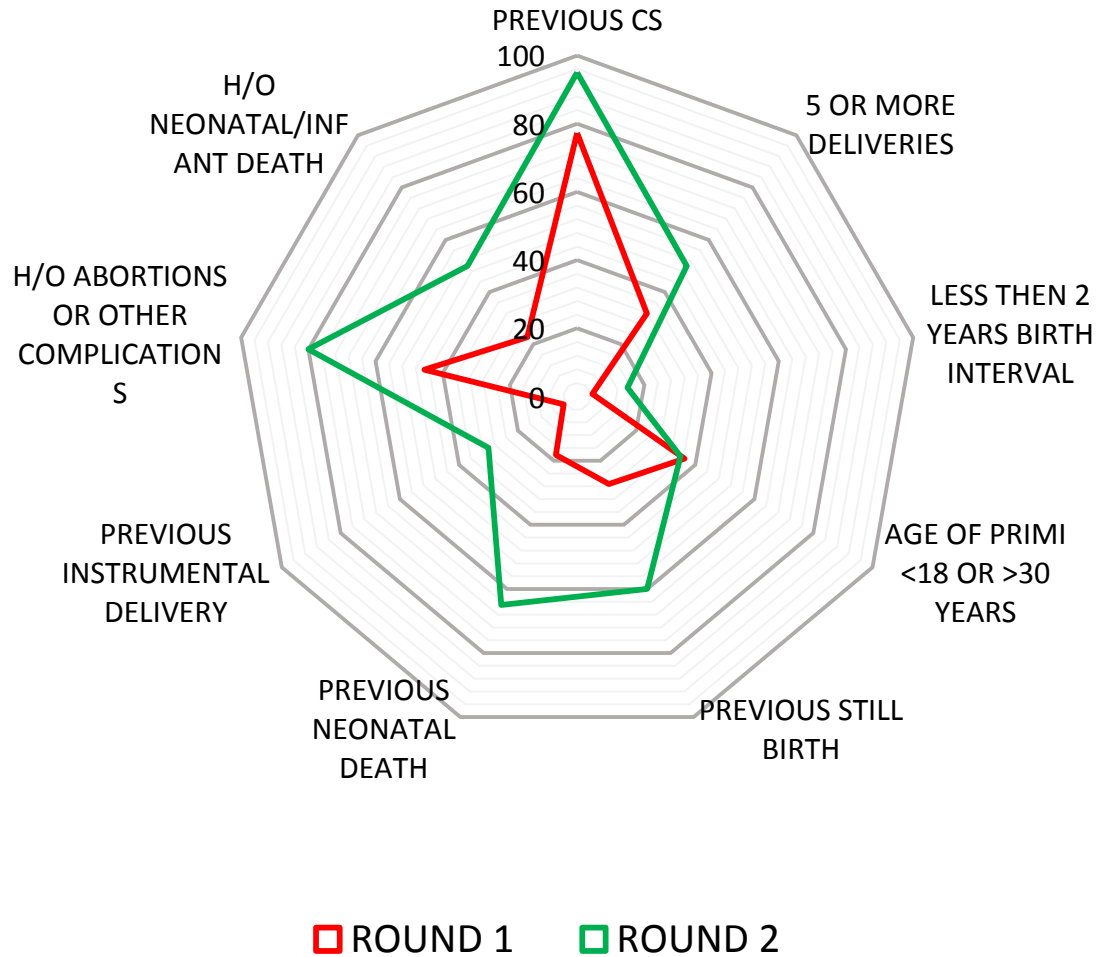
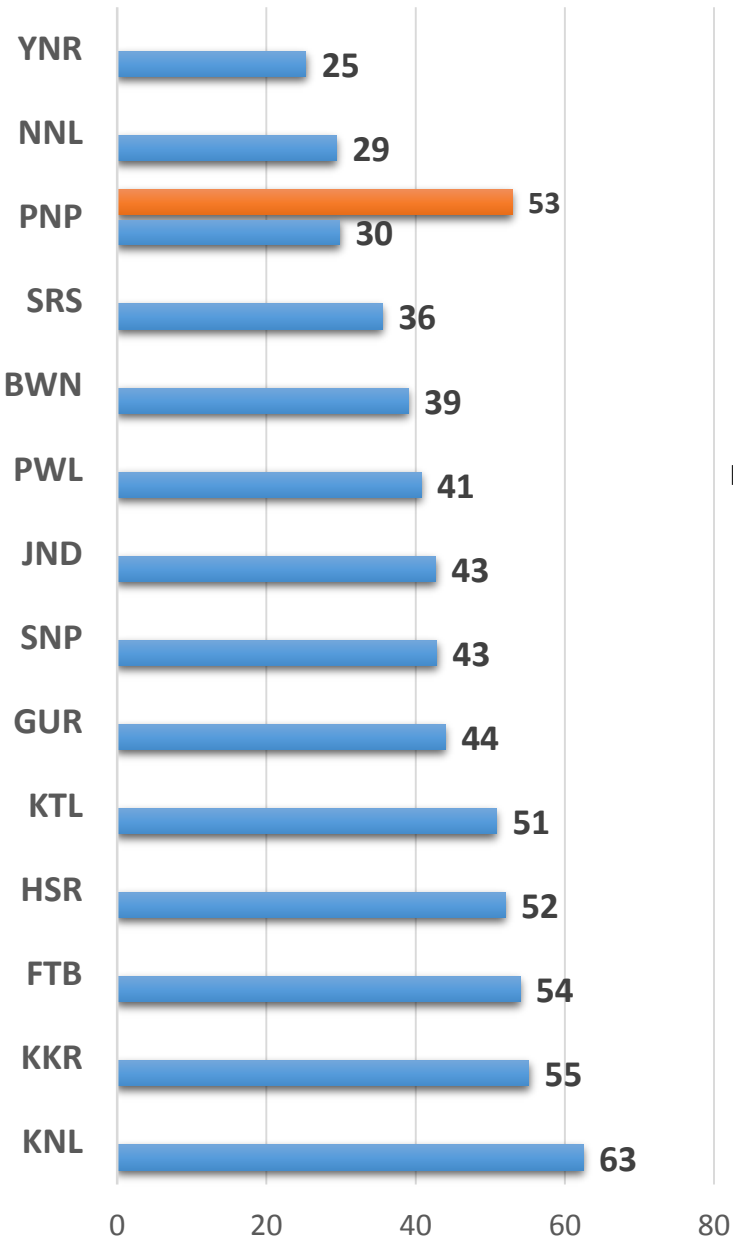
## District : Panipat round 2



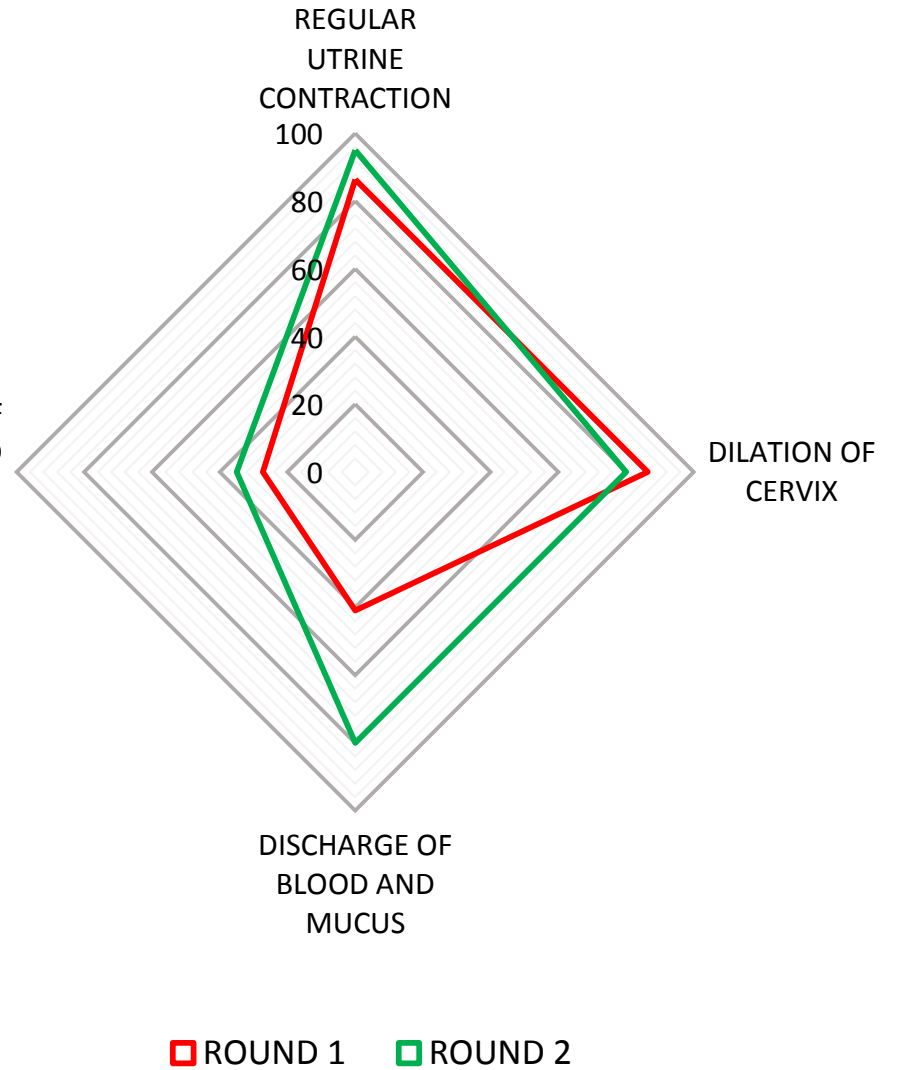
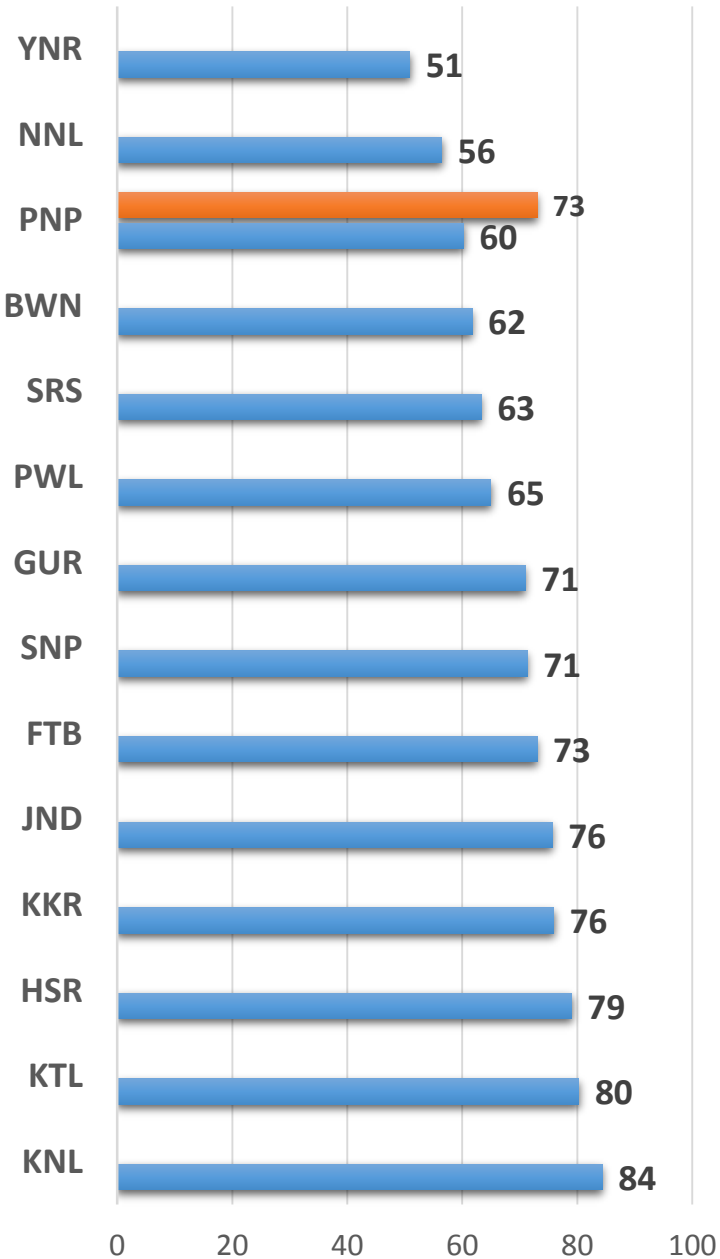
# KNOWLEDGE ABOUT EFFECTIVE ANC



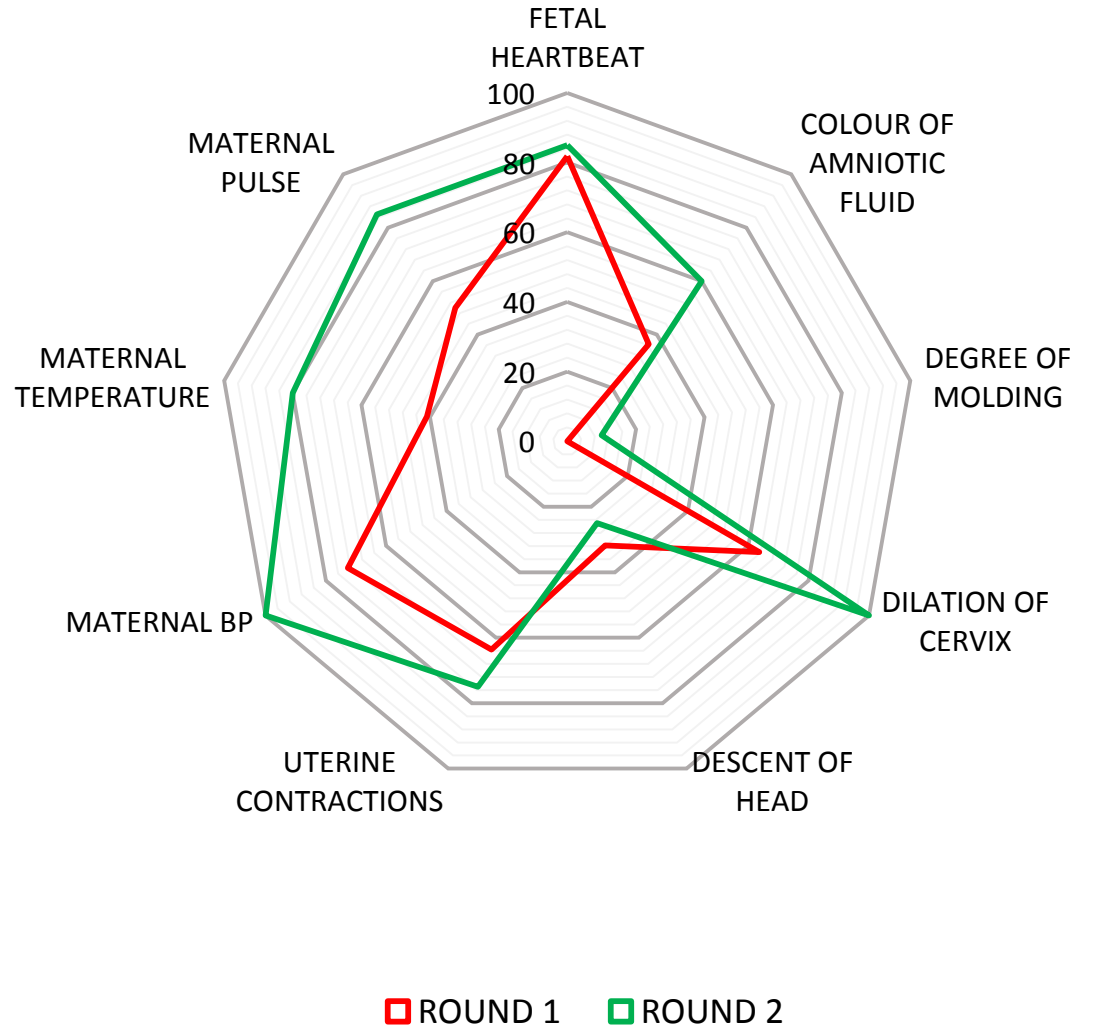
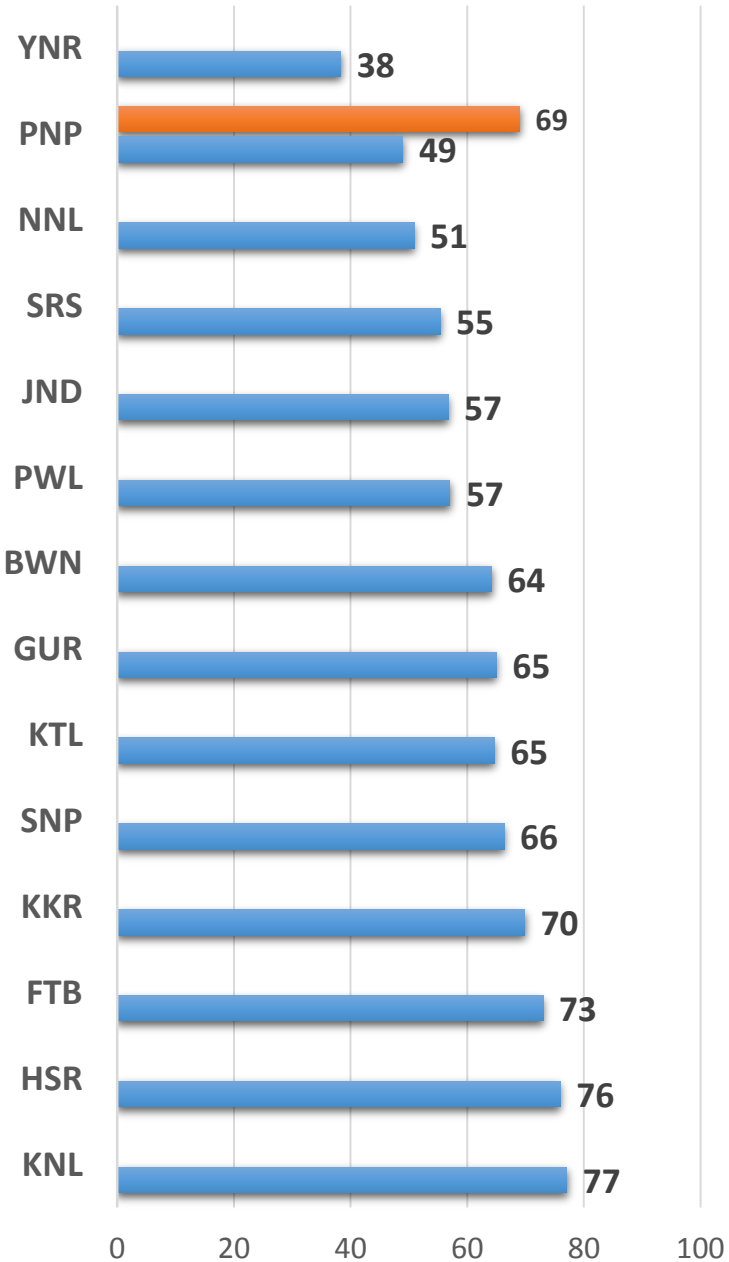
# KNOWLEDGE OF DETECTION OF HIGH RISK MOTHERS OR MOTHER REQUIRED SPECIAL CARE



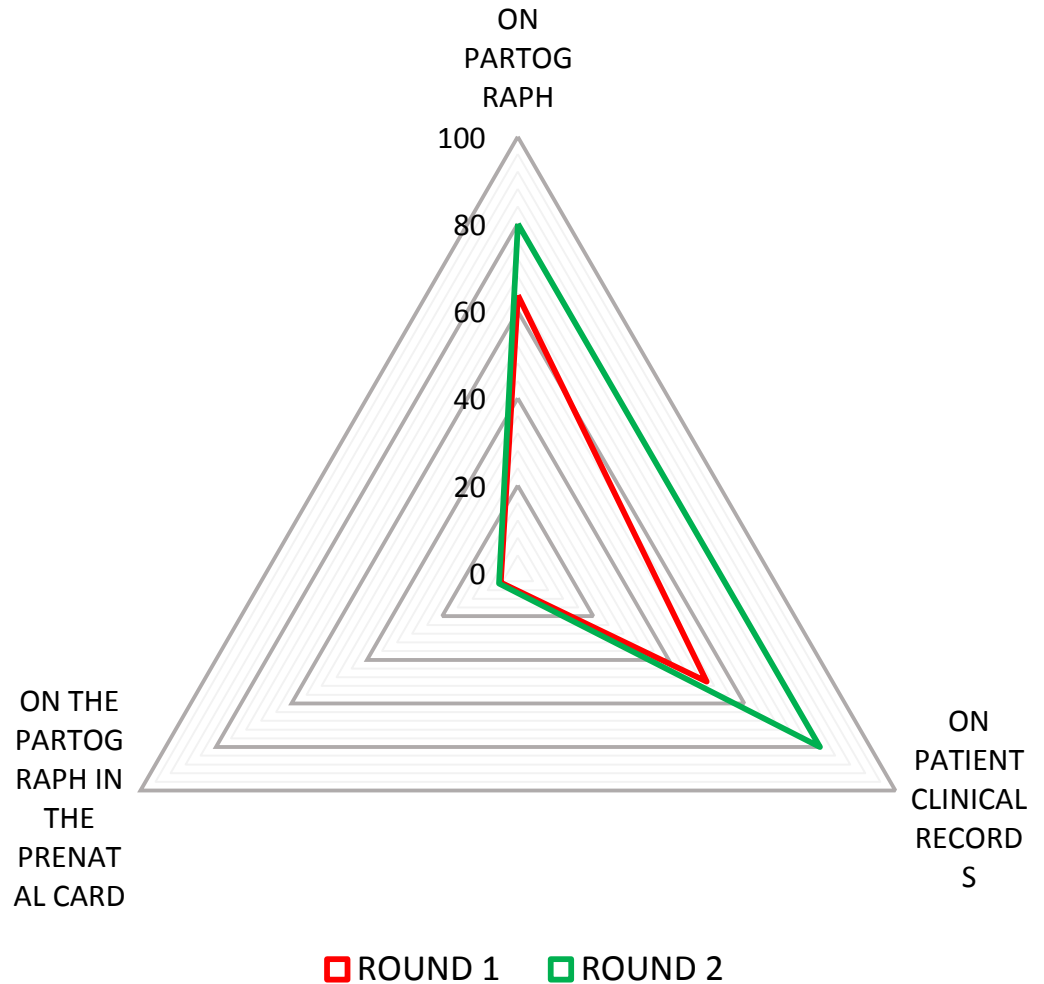
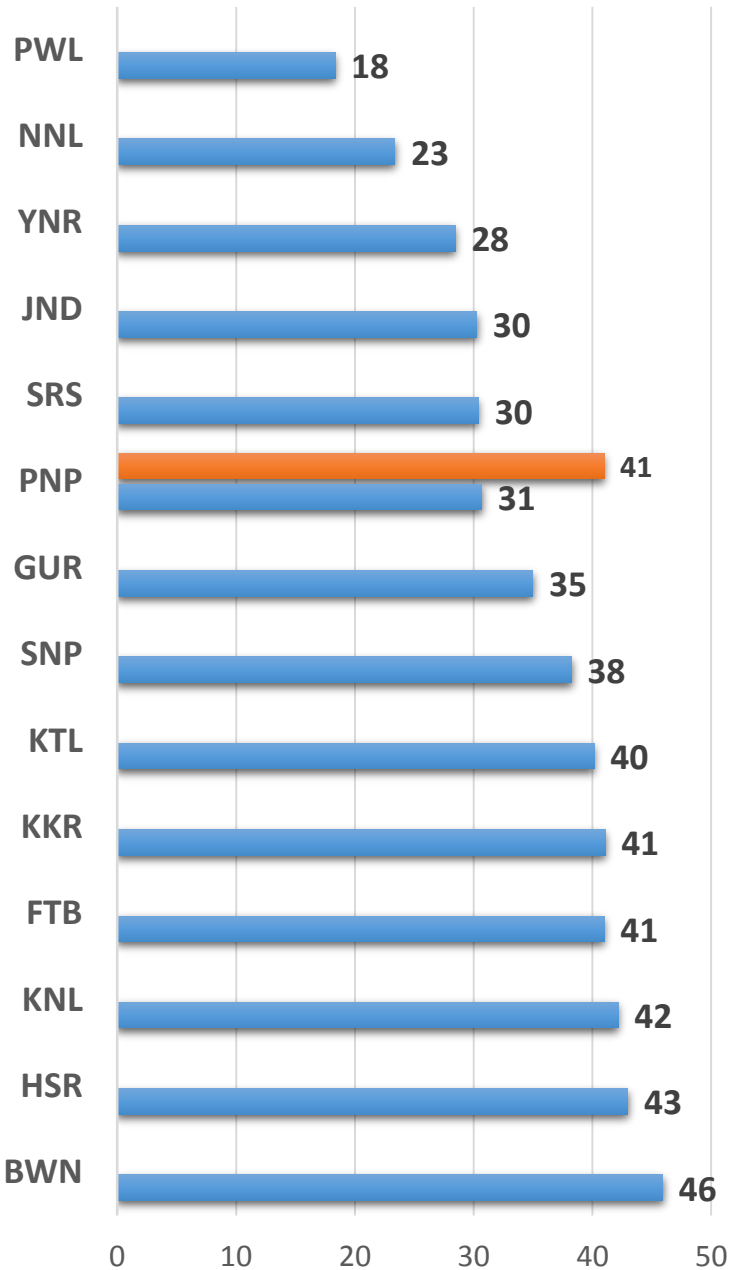
# KNOWLEDGE ABOUT LABOUR PROGRESS



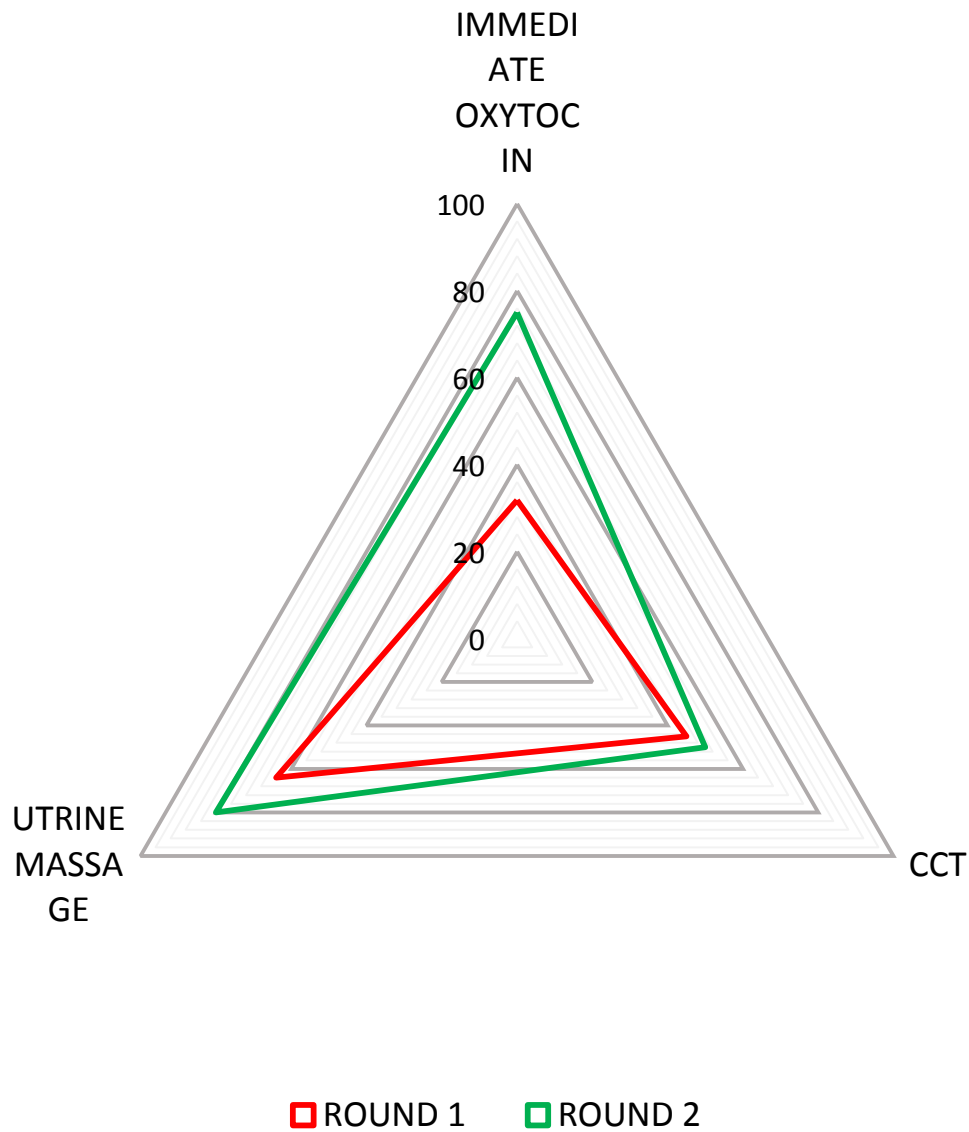
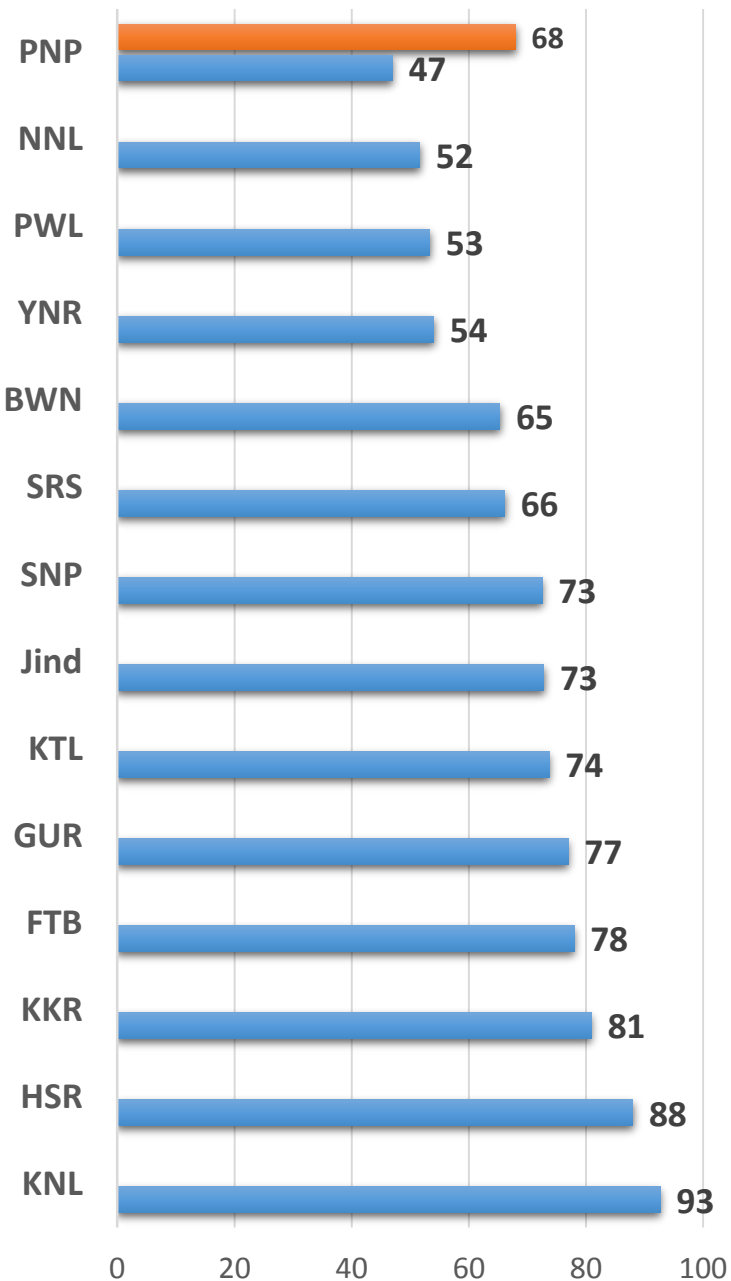
# LABOUR PROGRESS MONITORING KNOWLEDGE



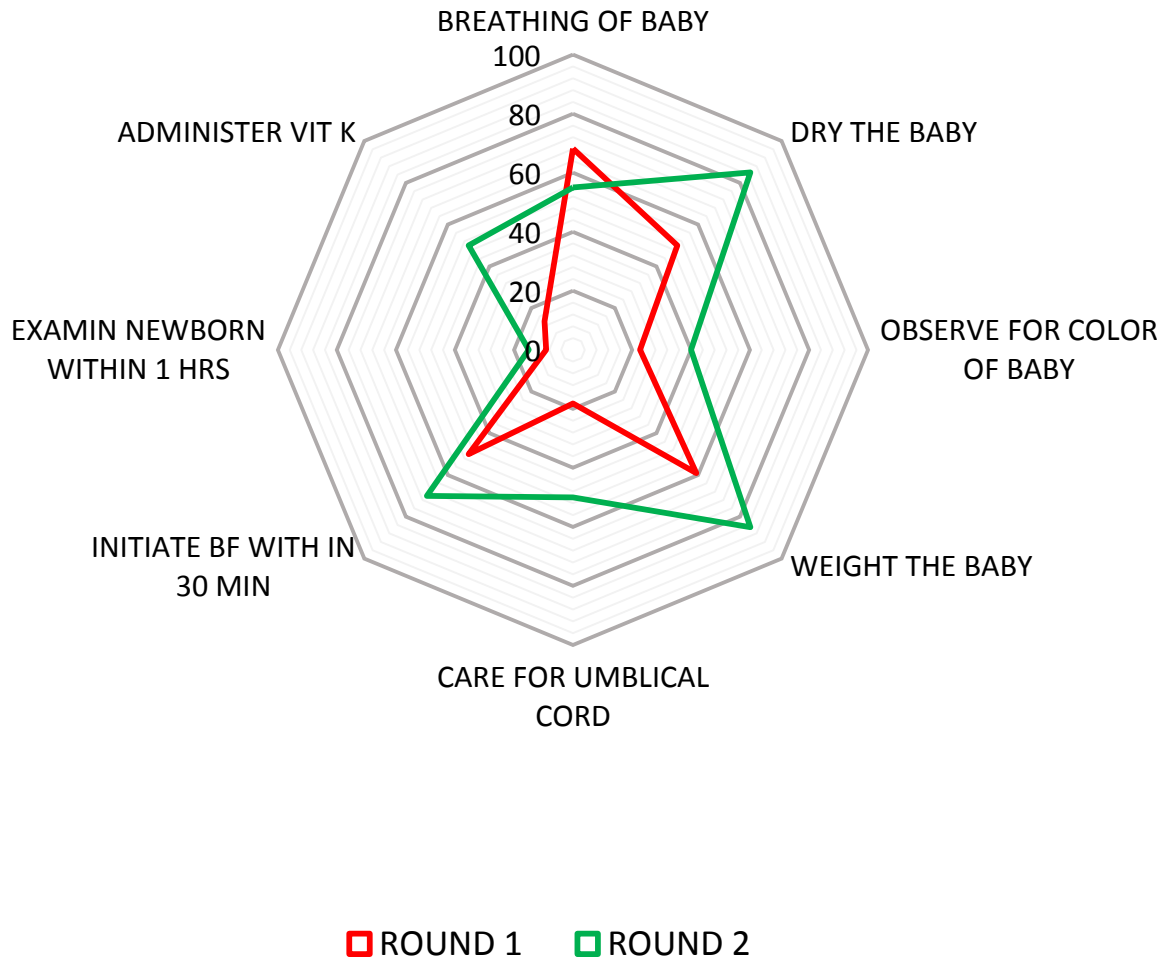
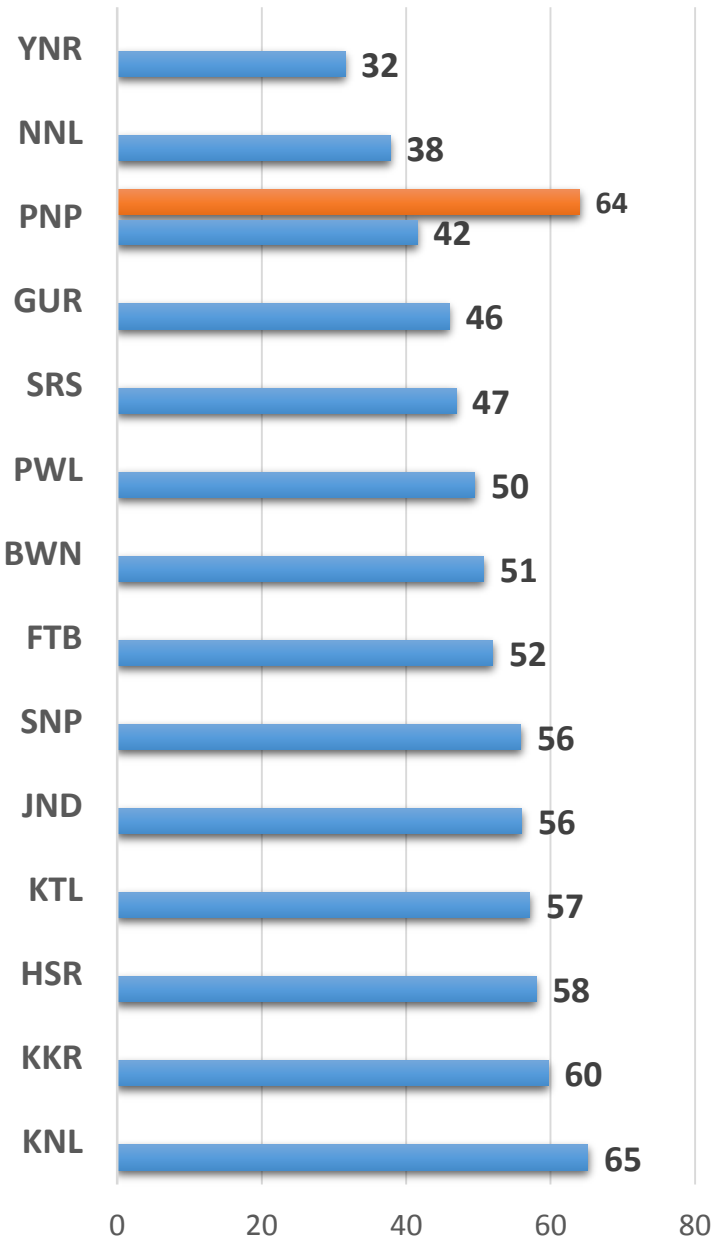
# RECORDING OF OBSERVATIONS



# KNOWLEDGE ABOUT 3 STAGE OF LABOUR MANAGEMENT



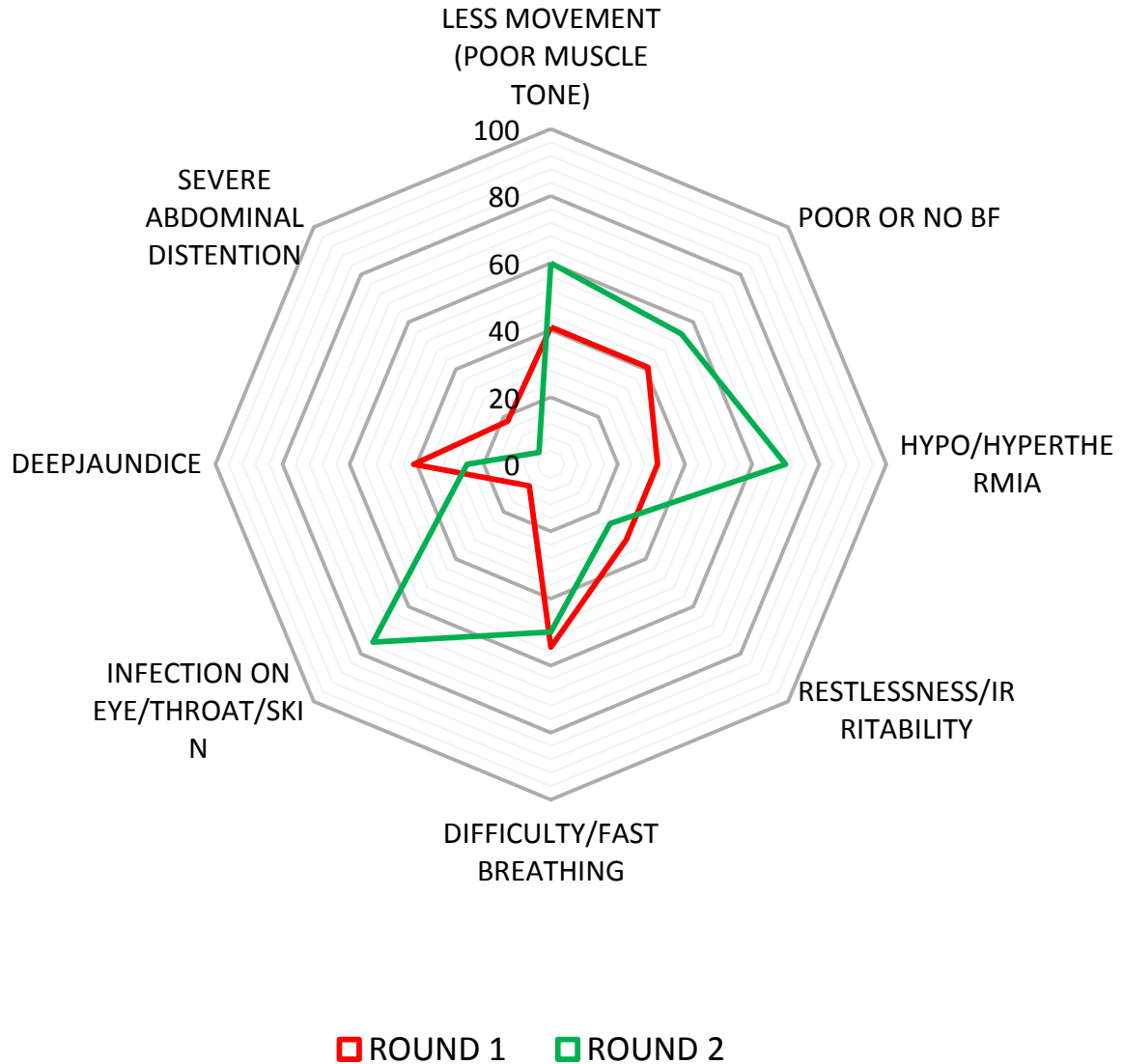
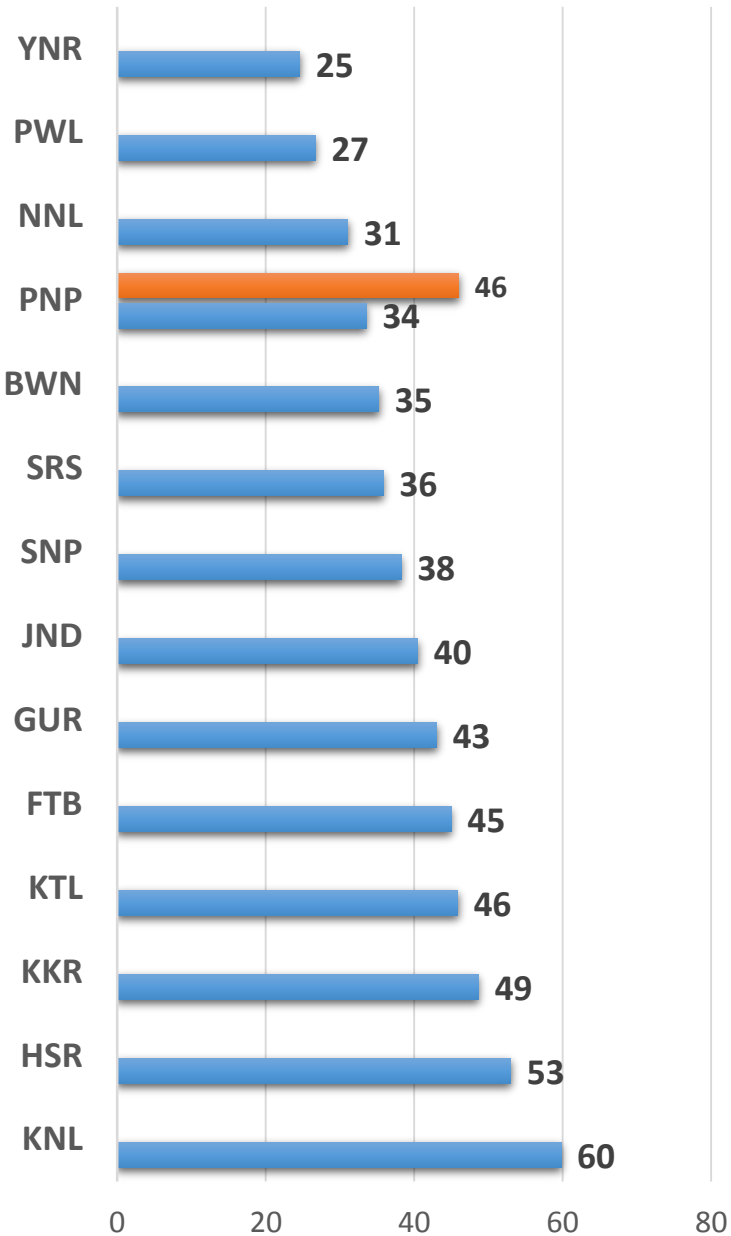
# KNOWLEDGE ABOUT IMMEDIATE CARE TO NEWBORN WITHIN 1 Hr



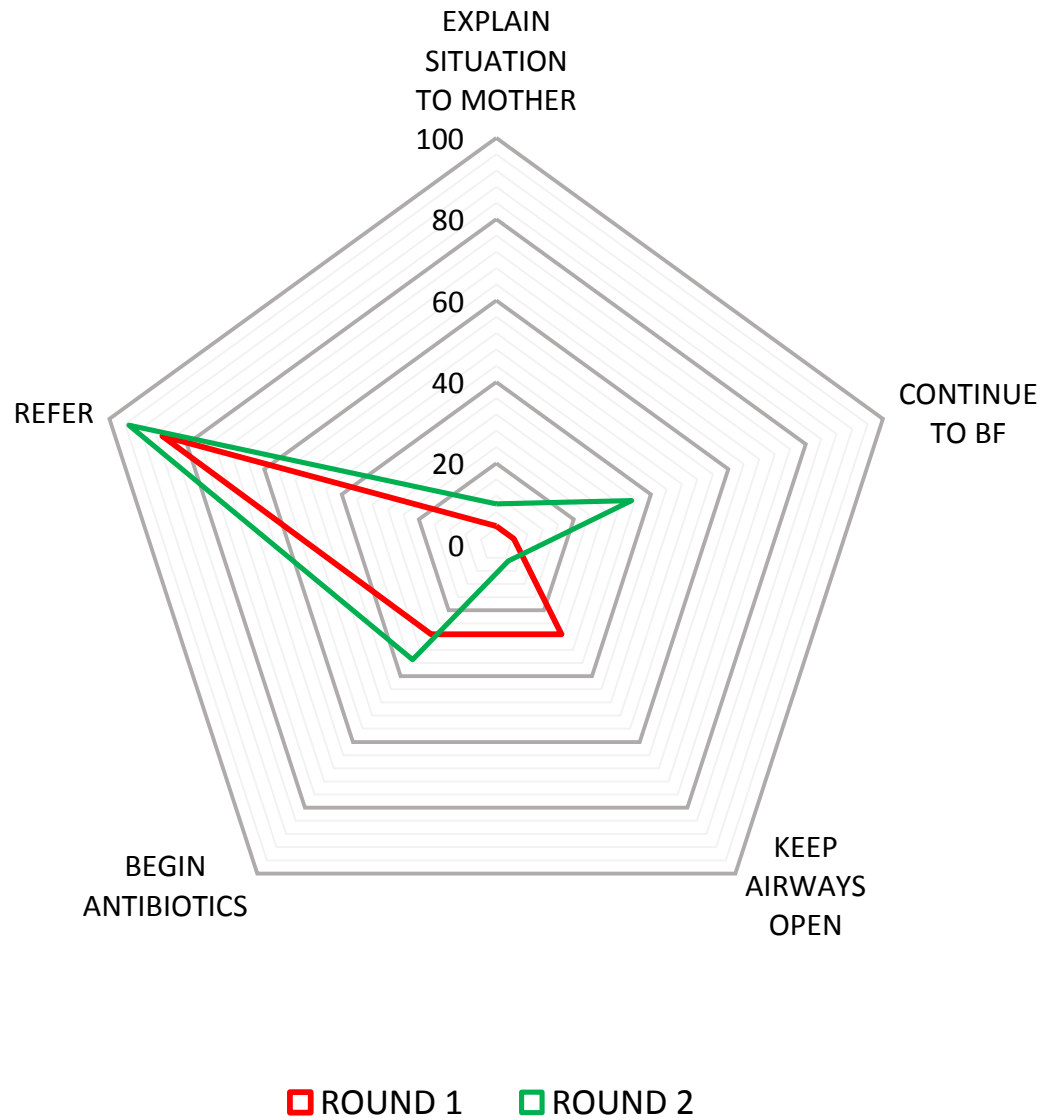
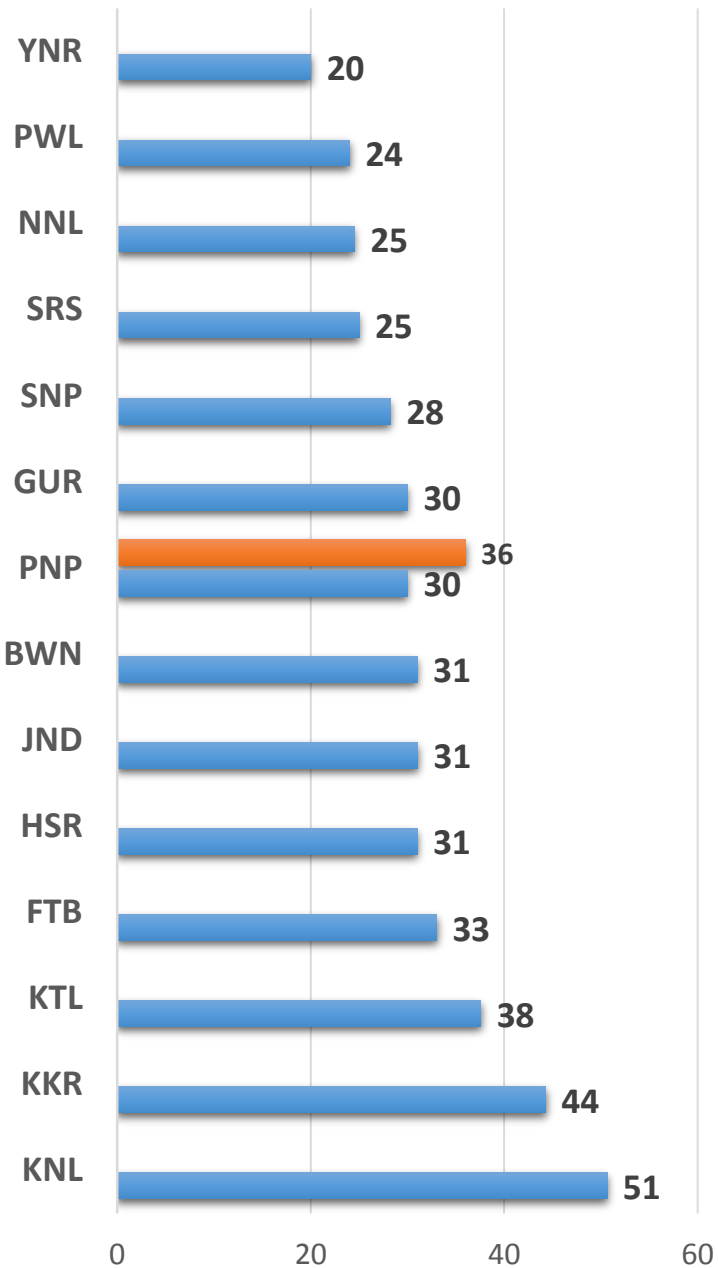
■ ROUND 1   
 ■ ROUND 2



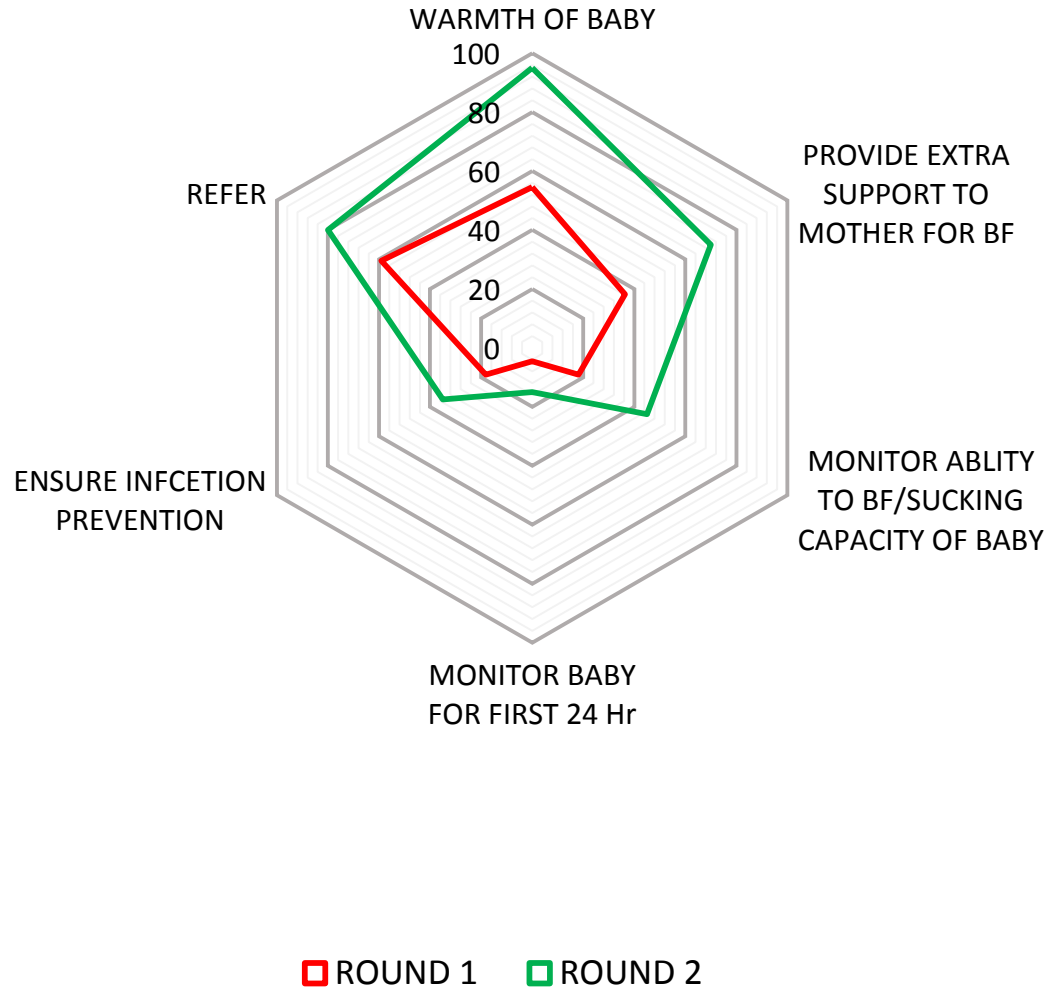
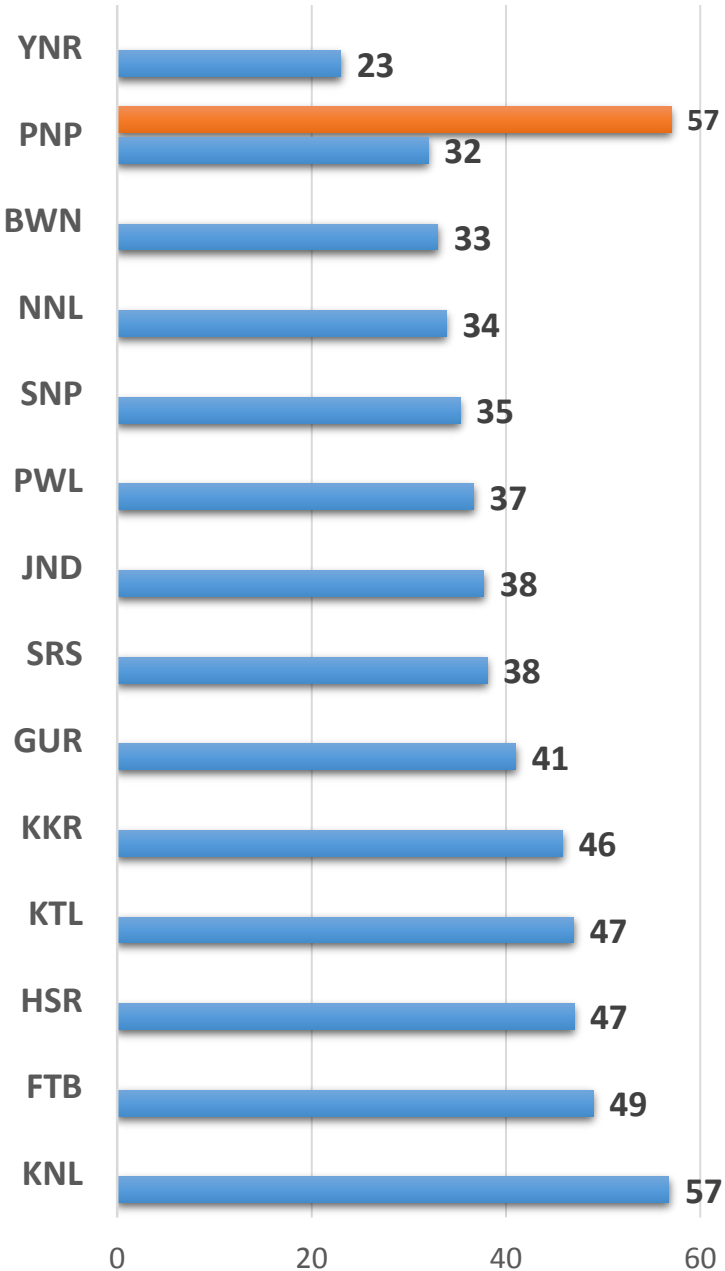
# KNOWLEDGE ABOUT SIGN AND SYMPTOMS OF SEPSIS/INFECTION IN NEWBORN



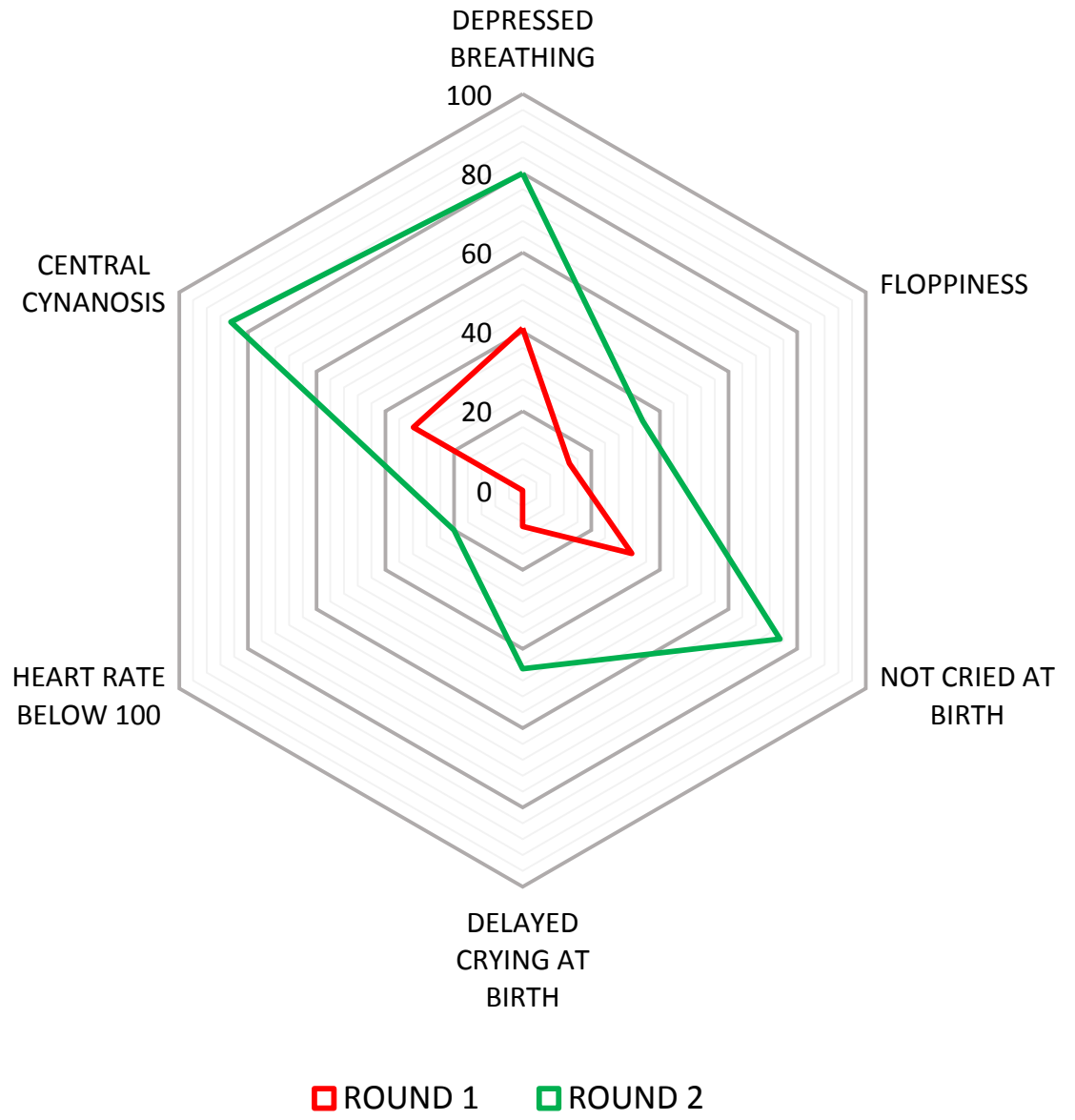
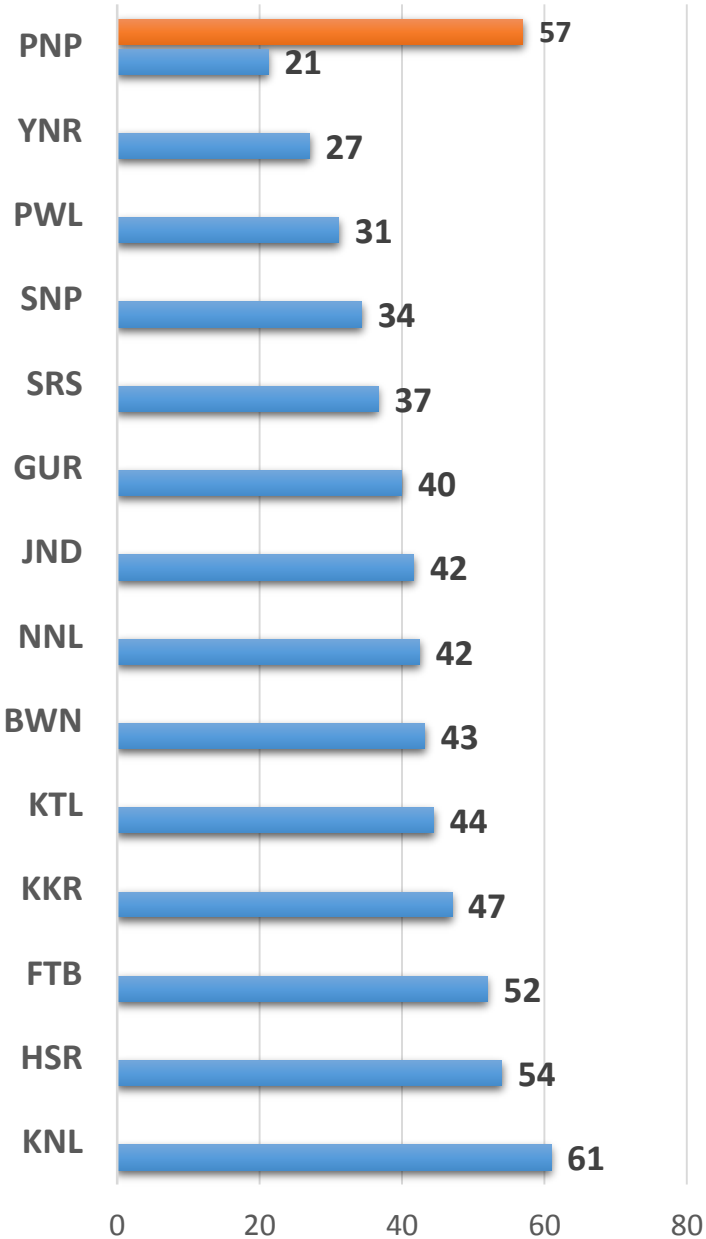
# KNOWLEDGE OF MANAGEMENT ABOUT INFECTION IN NEWBORN



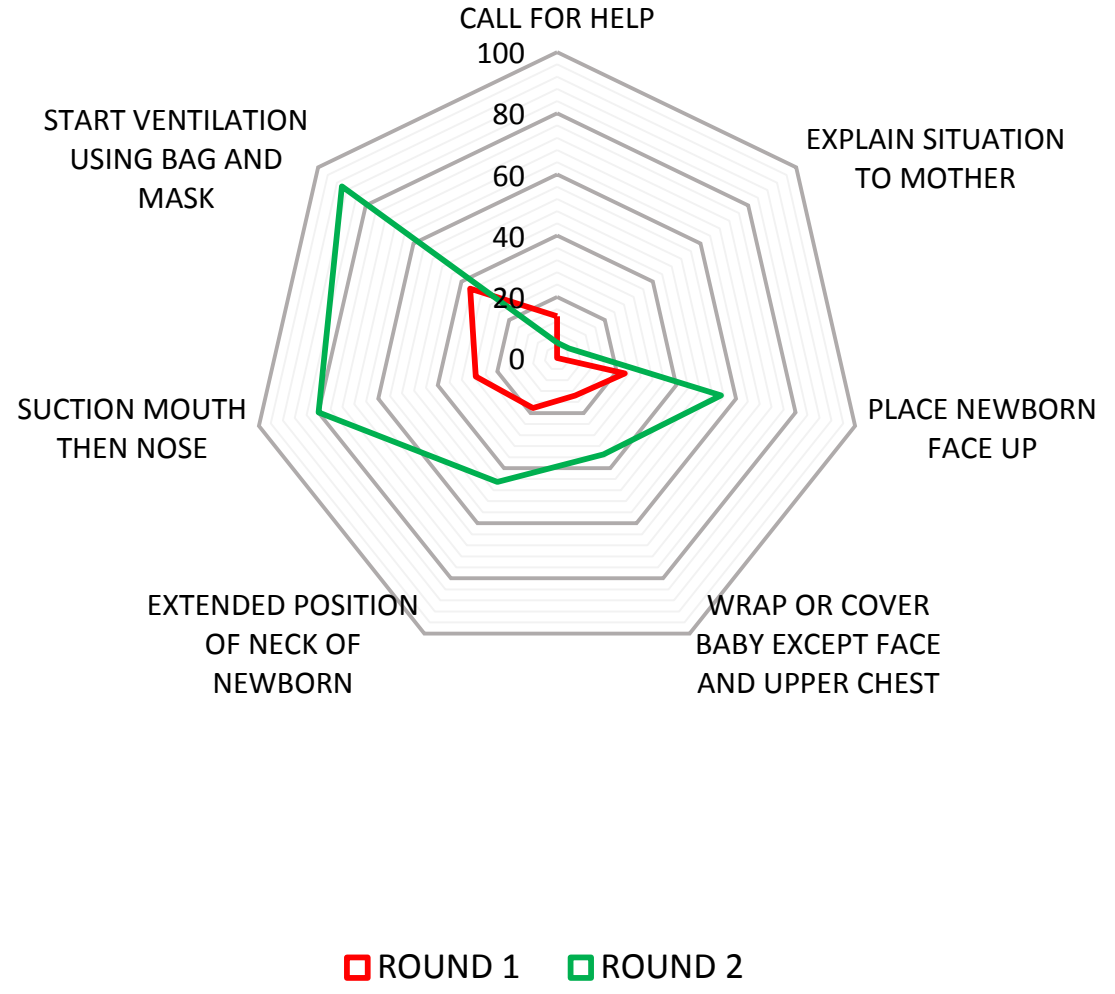
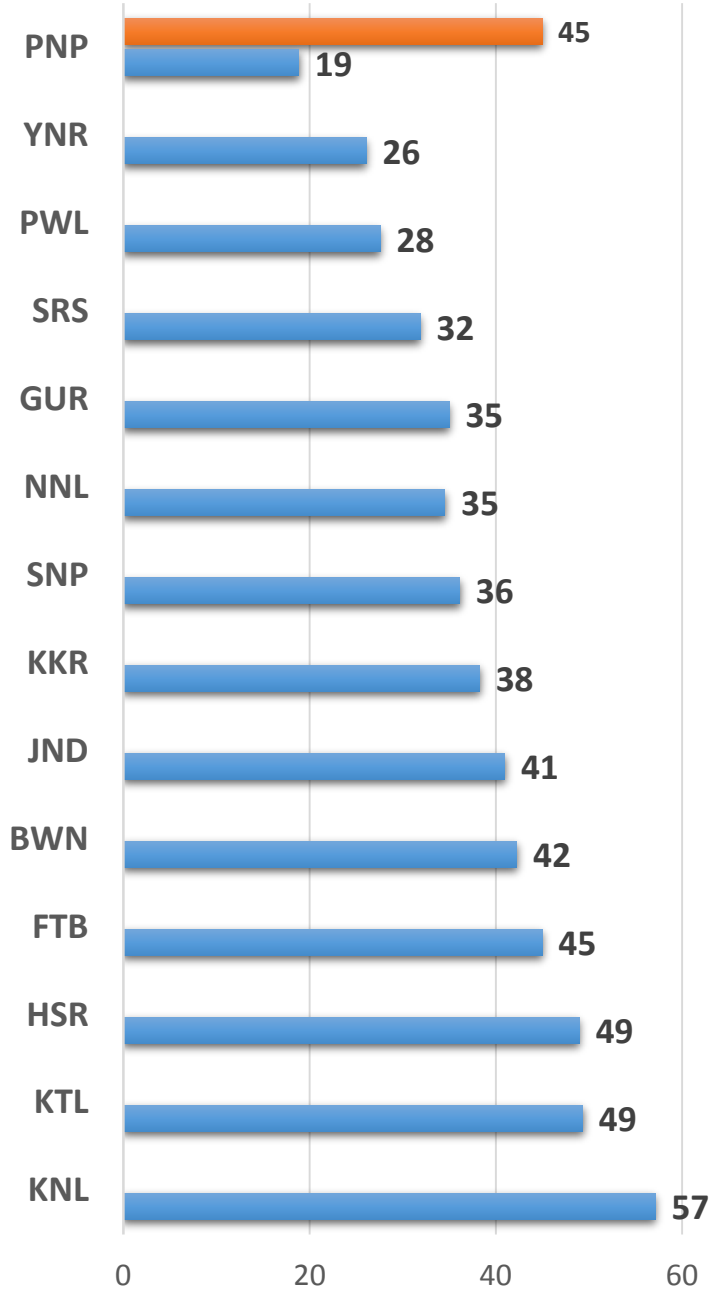
# KNOWLEDGE ABOUT MANAGEMENT OF LBW (<2.5 KG) BABIES



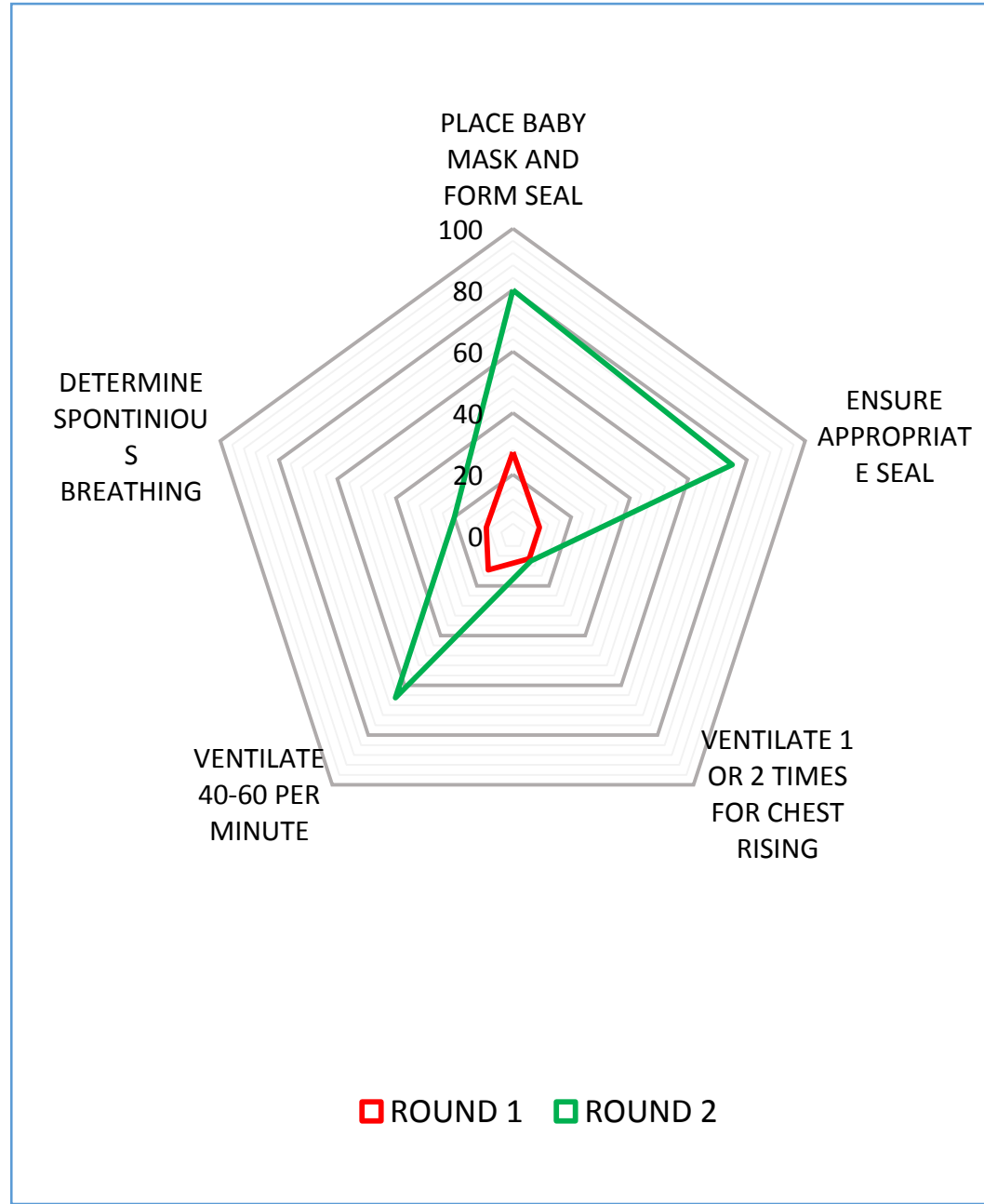
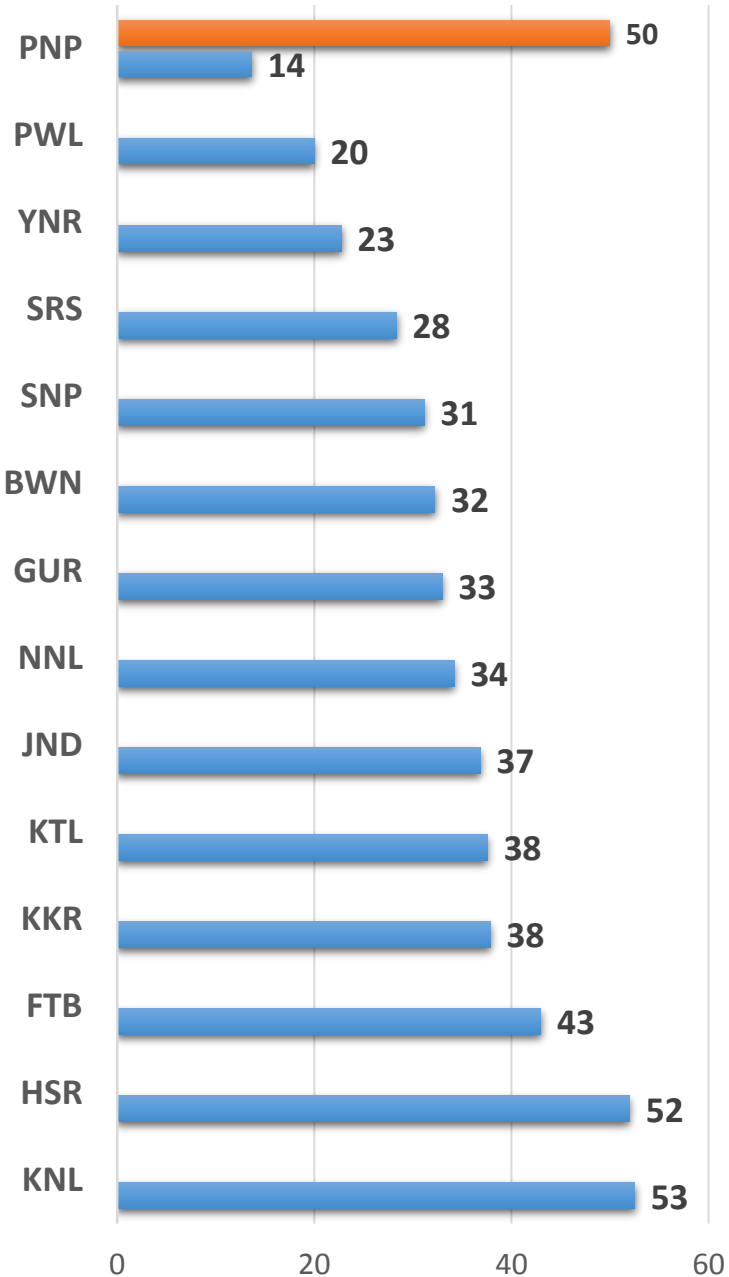
# KNOWLEDGE ABOUT SIGN AND SYMPTOMS OF BIRTH ASPHYXIA



# KNOWLEDGE ABOUT STEPS OF RESUSCITATION

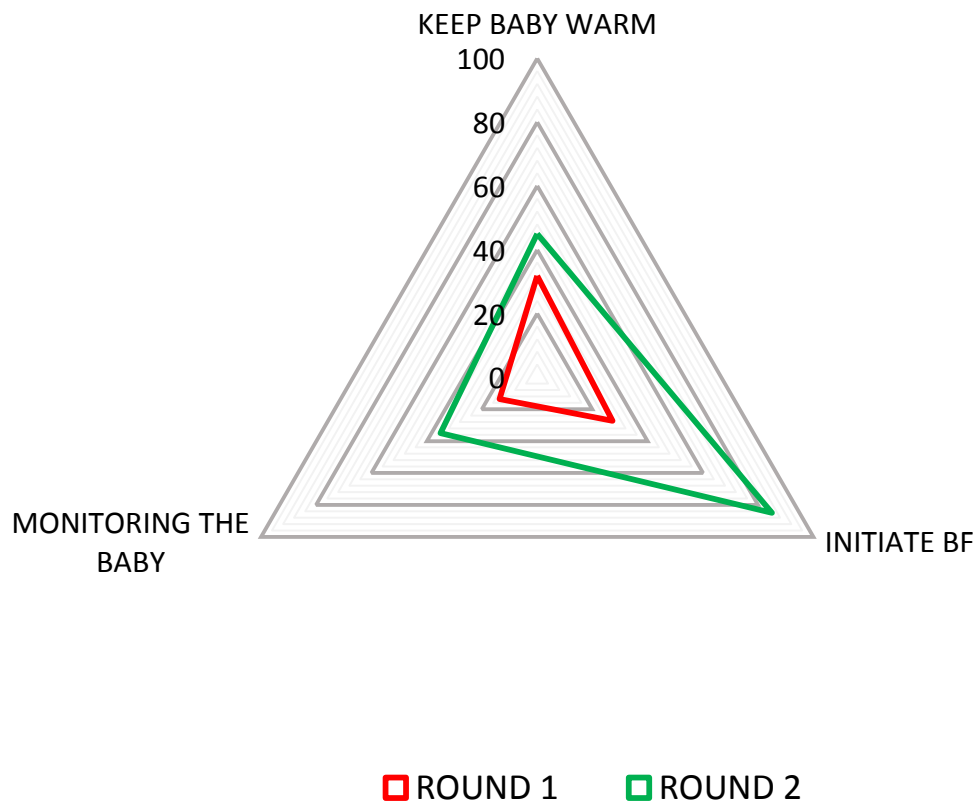
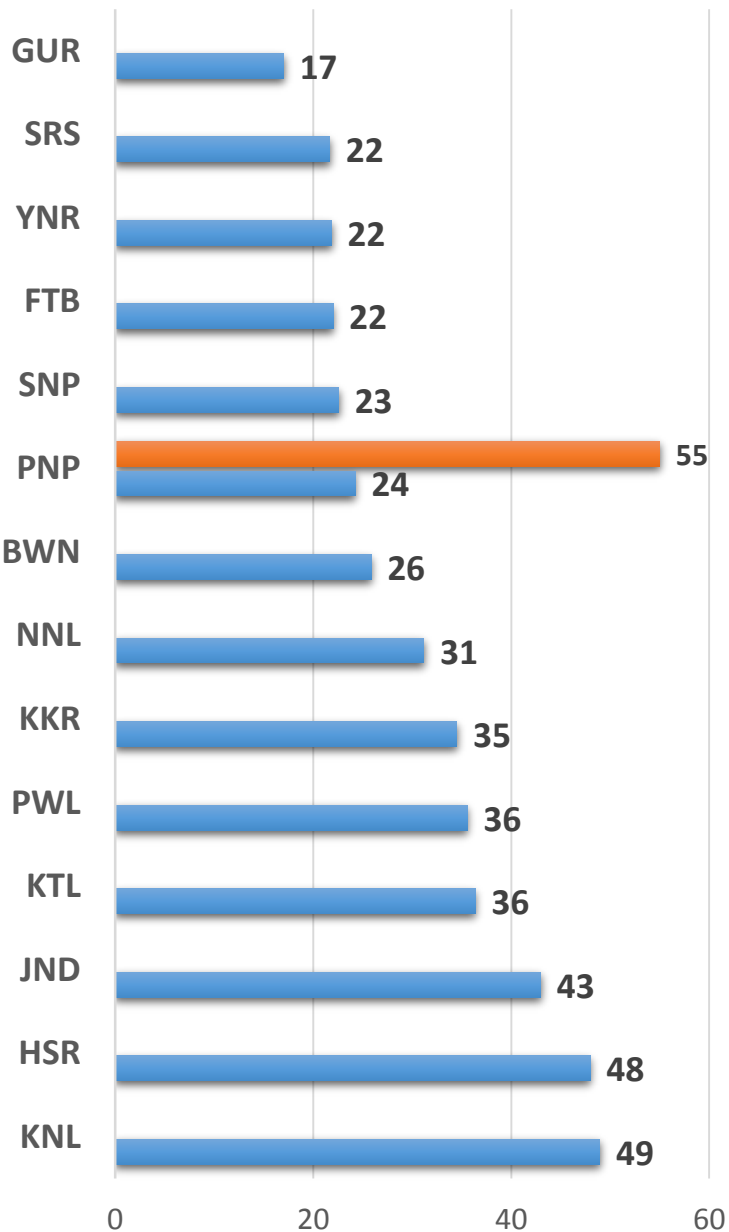


# KNOWLEDGE ABOUT RESUSCITATION STEP CONT...

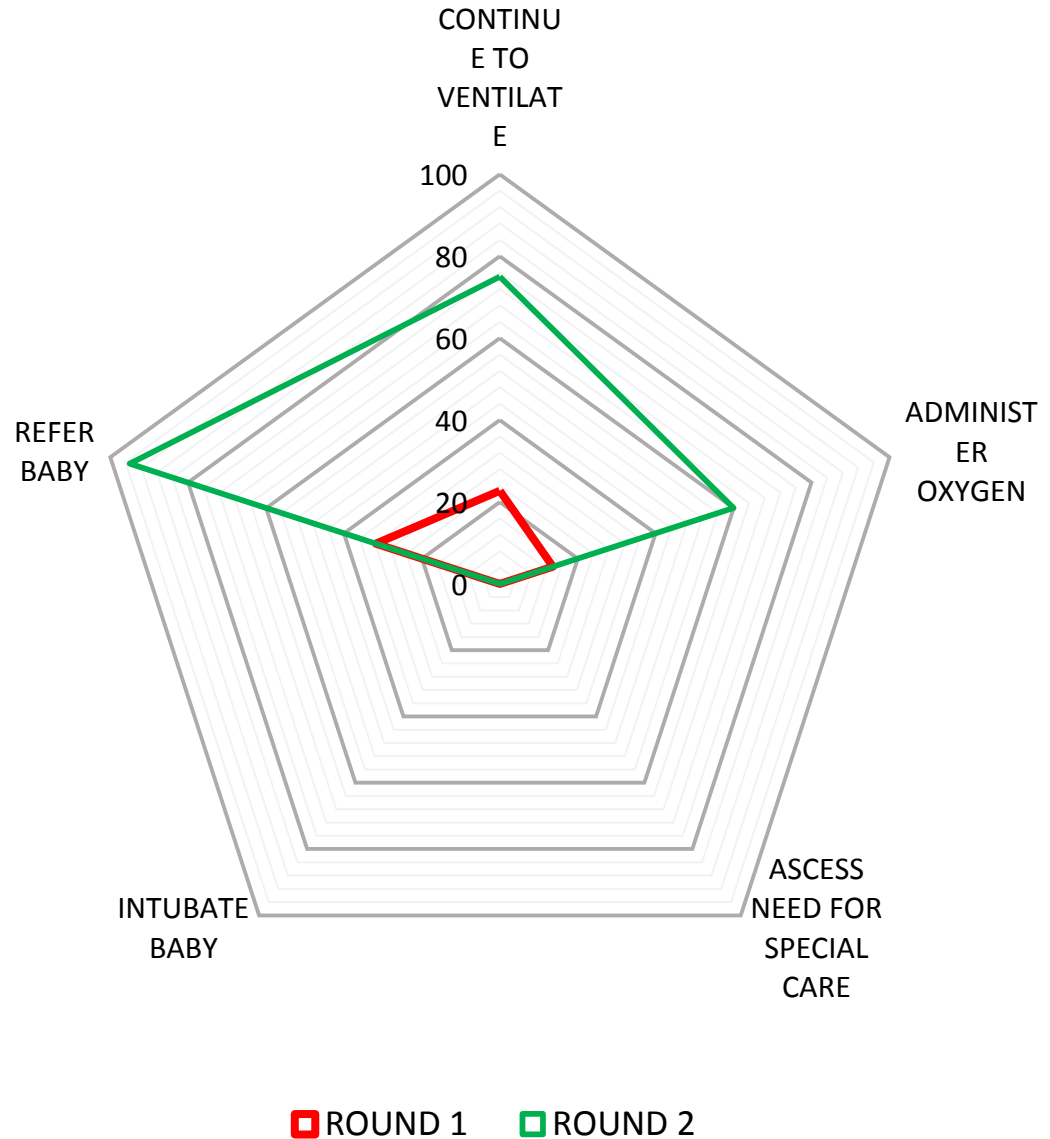
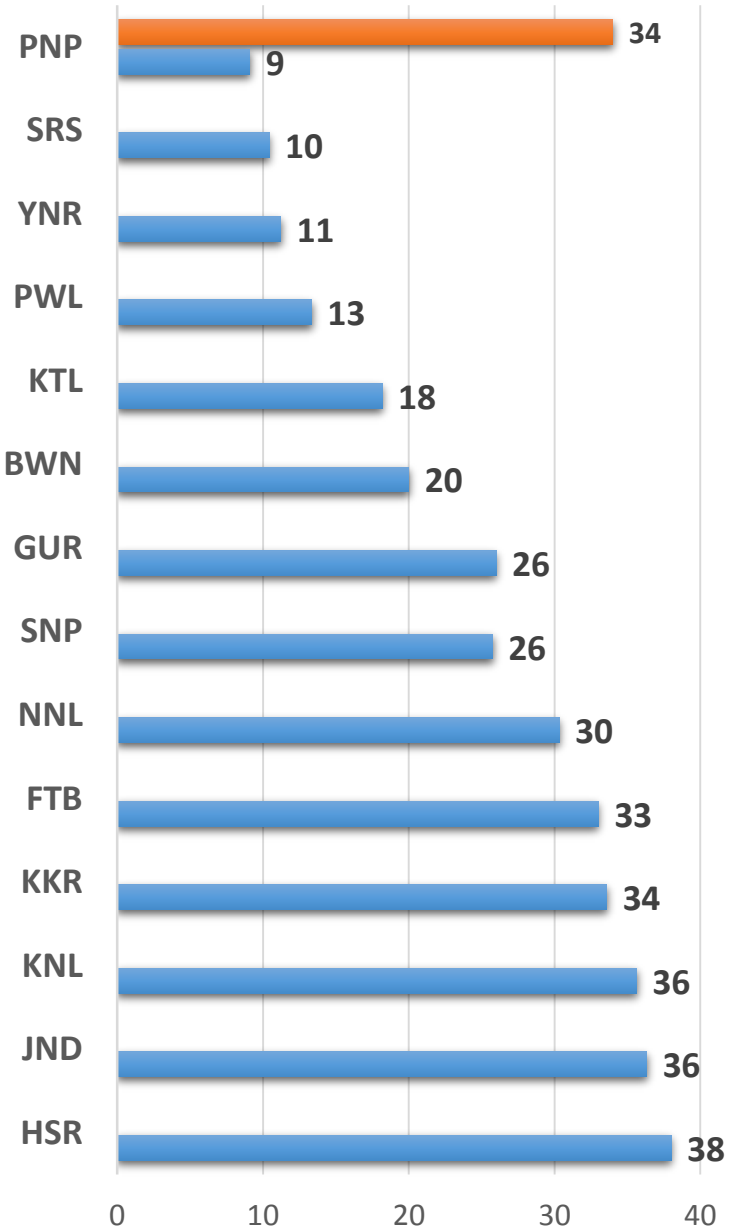


# Knowledge about what to do after resuscitation

## If baby is breathing after initial Resuscitation

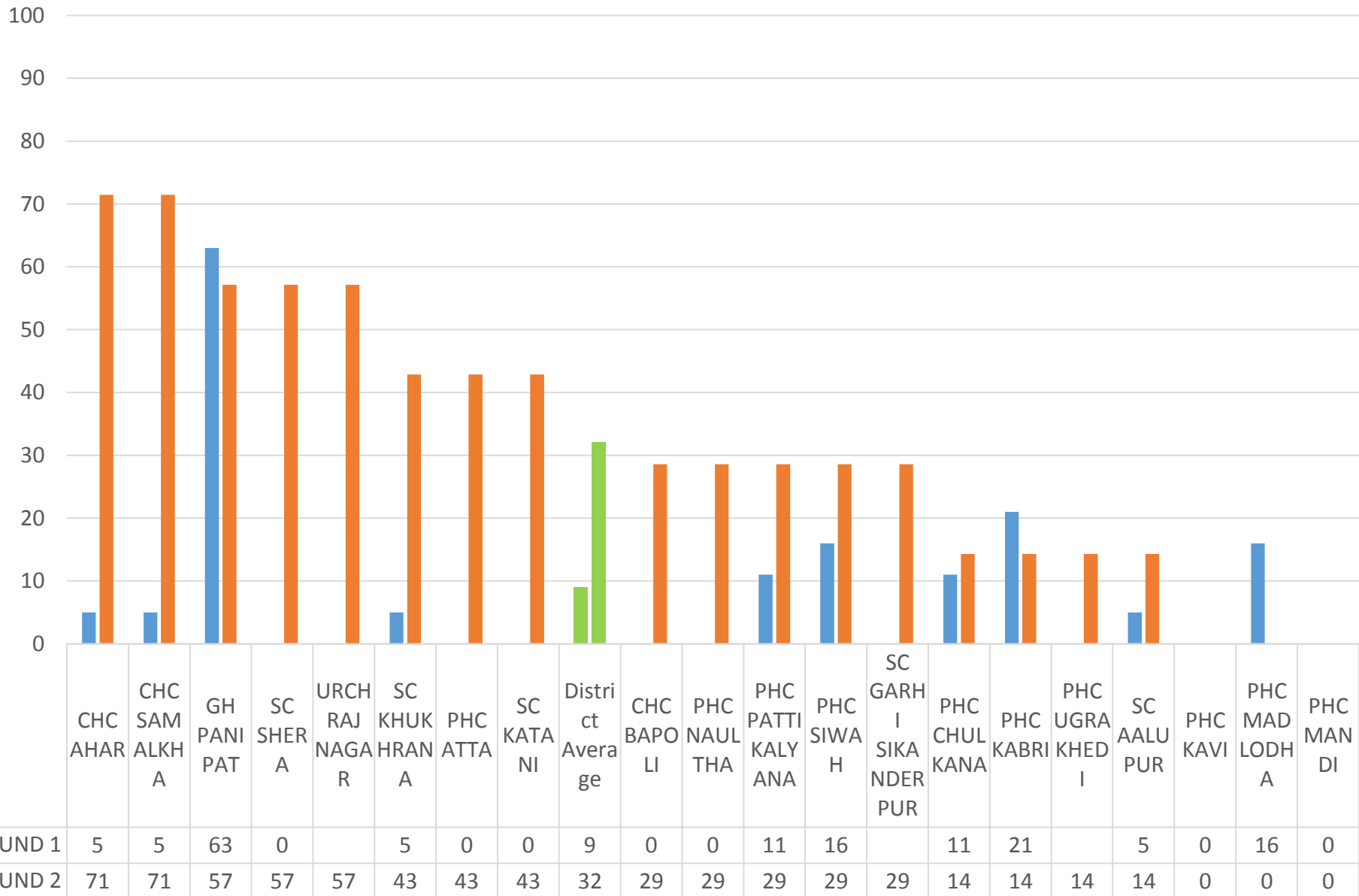


# What to do ? If baby is not breathing after initial Resuscitation

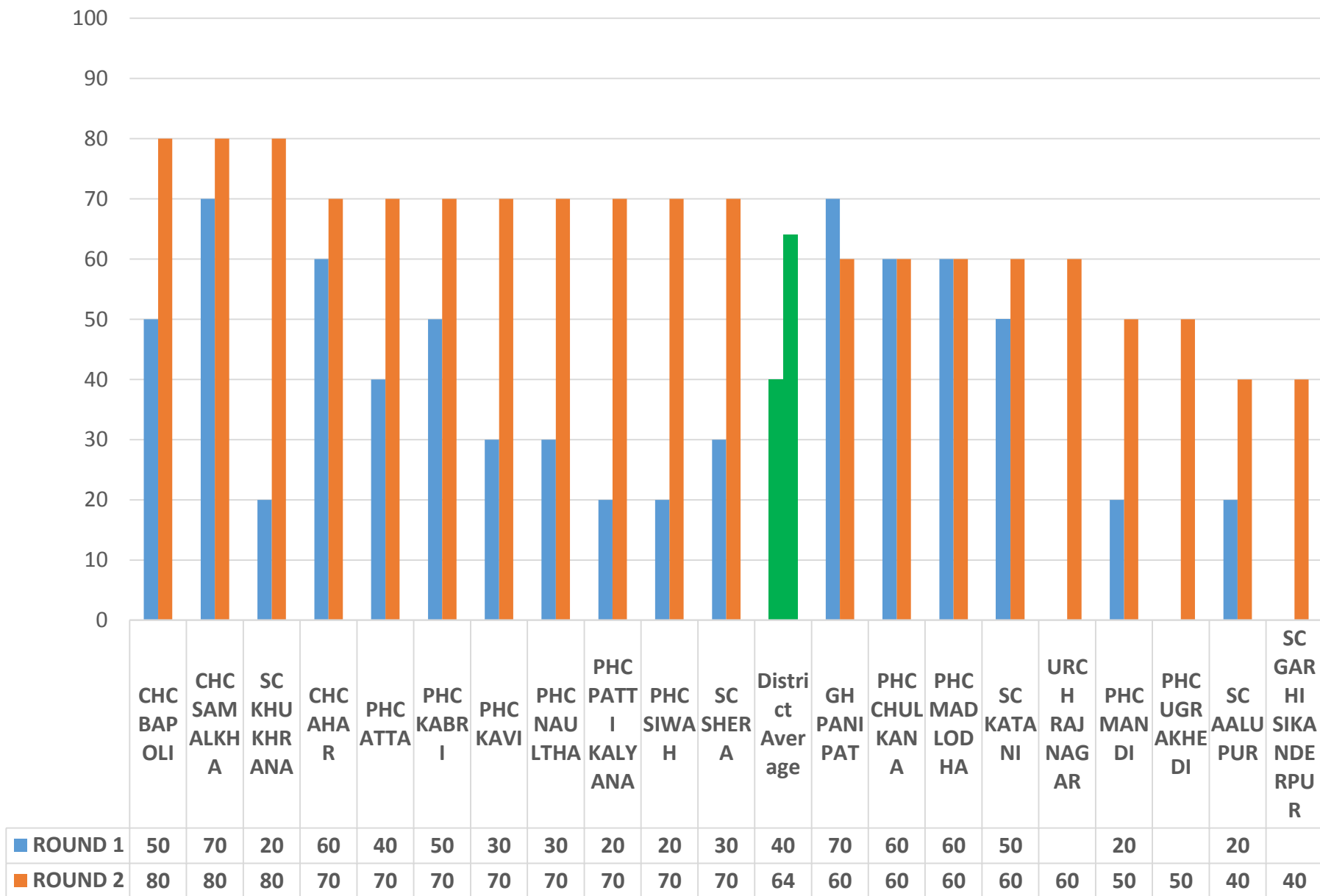




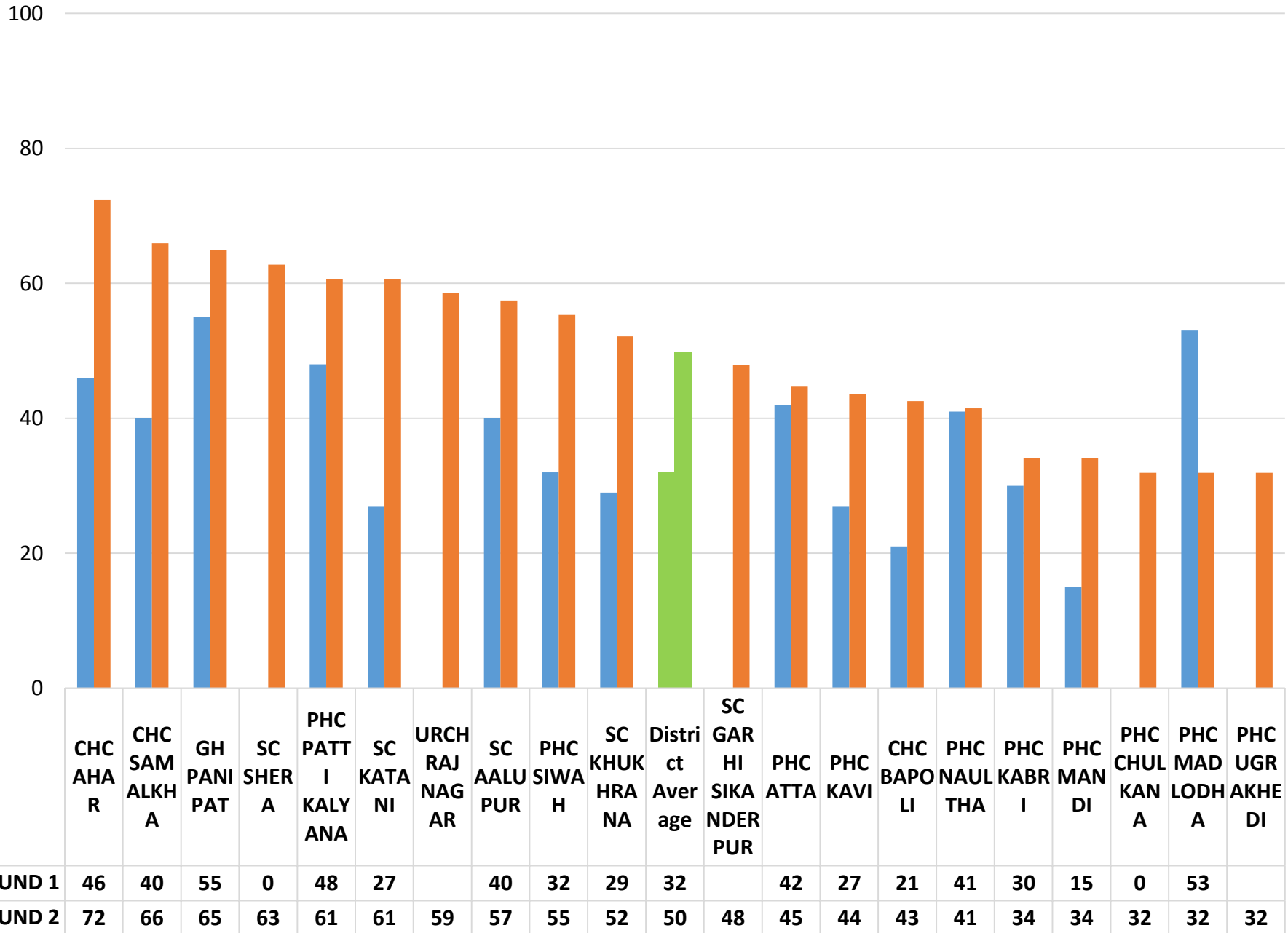
# Knowledge about Infection Prevention



# Availability of Protocols/ Guidelines at facility



# Essential Newborn Care and Resuscitation Skills



# Over All Status of facilities for ENBC/R

